

FPT-PTZ is a portable multi-purpose optical transmission device with small size and reliable performance. It provides RS-422, Gigabit Ethernet, synchronization and GPIO transmission, which is very suitable for the transmission of various control signals in the live-production environments. FPT-PTZ is equipped with a variety of mounting accessories, which can be installed in various shooting environments such as tripods, walls and ceilings.

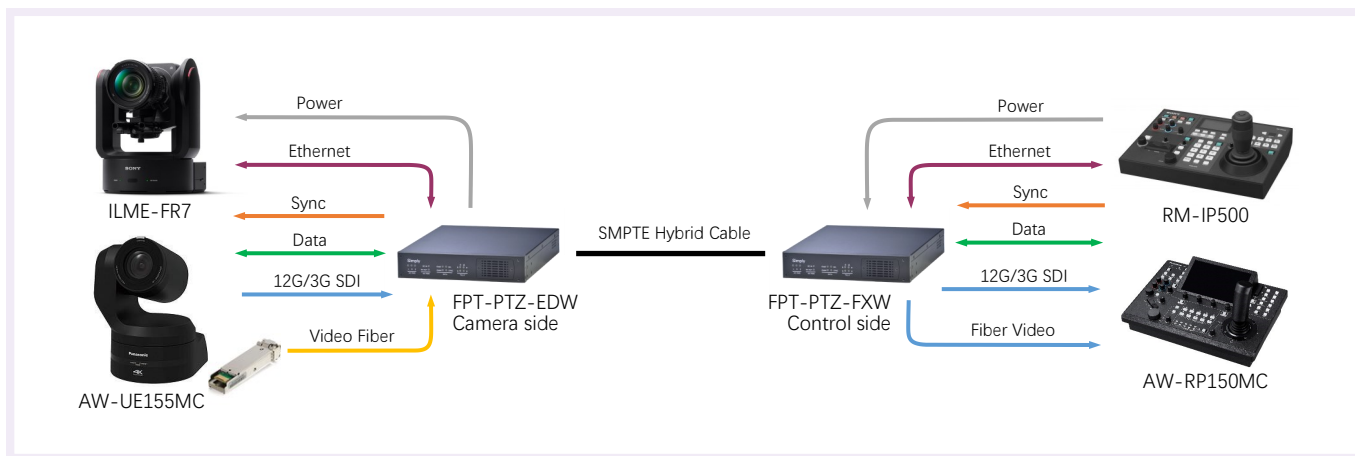
FPT-PTZ can be connected using either single-mode optical fiber or SMPTE hybrid cable. When using SMPTE hybrid cable, it can supply power to remote devices. FPT-PTZ can combine optical channel from other Incam optical transmission device in same SMPTE cable, also supports other third-party optical transmission equipment.



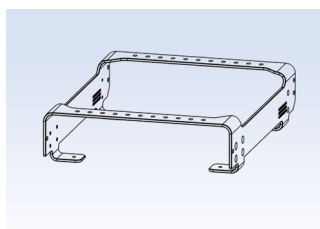
### Features

- ⦿ Compact size in half rack width, with dual power supply and 60W DC power output
- ⦿ Transmission distance can be up to 10 km when using standard single-mode fiber
- ⦿ Cable length up to 1km when powered by standard SMPTE hybrid cable
- ⦿ Built-in bidirectional CWDM, support third-party optical transmission equipment
- ⦿ Support RS-422, Gigabit Ethernet can transmit IP audio (AES67, Dante, etc.)

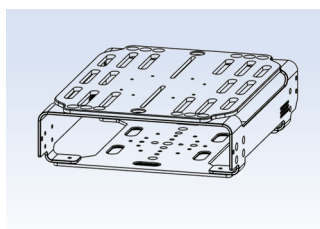
### System Configuration



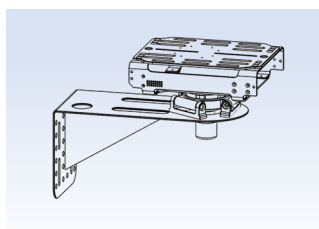
### Accessories



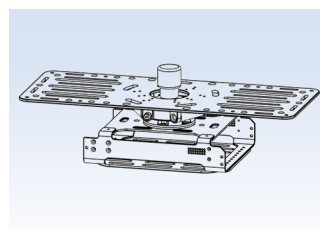
Portable Stand



Tripod Mount

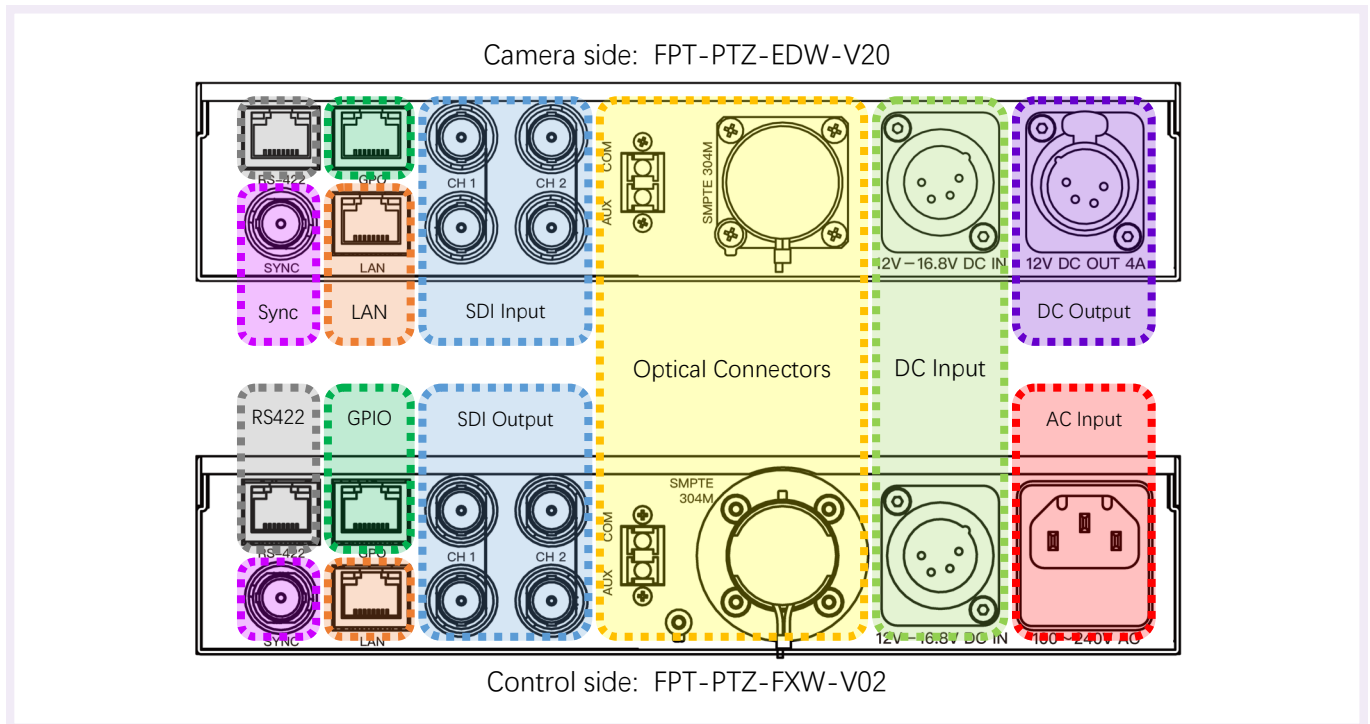


Wall Mount



Hanging Mount

### Rear Panel



### Technical Specifications

General		
Dimension	271mm×218mm×44mm	
Weight	3.8kg / 1.6kg (Control side / Camera side)	
Power Consumption	AC 110-240V, DC 9-16.8V, 30W	
DC Output	DC 12V, 4A (via SMPTE hybrid cable)	
Operating Temperature	0°C to +40°C	
Video		
Video Format	12G-SDI	3G-SDI
Signal Amplitude	800mV	800mV
Rising Time	38ps	56ps
Falling Time	37ps	52ps
Jitter (Timing)	0.58UI	0.12UI
Jitter (Align)	0.10UI	0.05UI

Connectors	
Serial	RJ45 (×1), RS-422 (with Tally)
LAN	RJ45 (×1), 1000BASE-TX
Sync	BNC (×1), BB / Tri-level
GPIO	RJ45 (×1), Three channels of Tally
Optical	
Connectors	SMPTE 304M (×1), LC (×1)
Transmit Distance	10km (Typical)
Spectrum	1310nm - 1610nm
Transmit Power	3dBm
Receive Sensitivity	-15dBm

Design and specifications are subject to change without notice.

### Ordering Information

- FPT-PTZ-FXW-V02** Control side unit (with 2-channel SDI output dual-out option)
- FPT-PTZ-EDW-V20** Camera side unit (with 2-channel SDI input with loop-out option)
- FPT-PTZ-FXW-V01** Control side unit (with 1-channel SDI output dual-out option)
- FPT-PTZ-EDW-V10** Camera side unit (with 1-channel SDI input with loop-out option)
- FPT-PTZ-FXW-V00** Control side unit (without SDI output option)
- FPT-PTZ-EDW-V00** Camera side unit (without SDI input option)

**INCAM Systems Co., Ltd.**

Building B6, North Park, No.315 Xiqing Road, Yangliuqing Town, Xiqing District, Tianjin, China

